

Lamello

Exclusively Distributed by

COLONIAL SAW
MACHINERY SALES AND SERVICE

CONSUMER PRICE LIST

Pricing effective January 1, 2019

www.csaw.com / LAMELLO@csaw.com
(888) 777-2729 (EAST) / (800) 252-6355 (WEST)

Lamello Machines

Zeta P2



Description	Part Number	List Price
Zeta P2 with carbide cutter, drill jig and systainer case	101402S	\$1,695.00
Zeta P2 with diamond cutter, drill jig and systainer case	101402DS	\$1,850.00

Top 21



Description	Part Number	List Price
Top 21 with systainer case	101500S	\$1,195.00

Classic X



Description	Part Number	List Price
Classic X	101600K	\$ 649.00

Profila P



Description	Part Number	List Price
Profila P	111964	\$ 595.00

P-System Connectors

Clamex P-14



Description	Product	Qty/ Pair	Part Number	List Price
The Standard Material: Fiberglass reinforced plastic Size: 64x27x9.7mm Lateral tolerance: ± 1mm	Clamex P-14	80	145334	\$ 120.00
	Clamex P-14	300	145346	\$ 415.00

Clamex Medius P-14/10



Description	Product	Qty/ Pair	Part Number	List Price
Dividing panel connector Material: Fiberglass reinforced plastic Size: 64x13.5x9.7mm/52x7.5x9.7mm Lateral tolerance: ± 1mm	Clamex Medius	80	145370	\$ 120.00
	Clamex Medius	300	145371	\$ 415.00

Clamex P-10



Description	Product	Qty/ Pair	Part Number	List Price
Connector for thinner materials Material: Fiberglass reinforced plastic Size: 52x19x9.7mm Lateral tolerance: ± 0.5mm	Clamex P-10	80	145372	\$ 120.00
	Clamex P-10	300	145373	\$ 415.00

Clamex S-18



Description	Product	Qty/ Pair	Part Number	List Price
Install with standard Biscuit Joiner Material: Fiberglass reinforced plastic Size: 66x29x8mm Lateral tolerance: ± 2mm	Clamex S-18	18	145231	\$ 55.00
	Clamex S-18	80	145236	\$ 205.00
	Clamex S-18	300	145241	\$ 675.00

*Use with cutter 132108 and 132118 only.

Bisco P-14



Bisco P-10 available upon request.

Description	Product	Qty/ Pair	Part Number	List Price
Alignment elements Material: Plastic Size: 65x27x7mm Lateral tolerance: ± 2mm	Bisco P-14	80	145301	\$ 35.00
	Bisco P-14	300	145302	\$ 85.00

Divario P-18



Description	Product	Qty/ Pair	Part Number	List Price
Slide-in connector - self clamping Material: Fiberglass reinforced plastic Size: 52x19x9.7mm Lateral tolerance: ± 1mm	Divario P-18	80	145550	\$ 85.00
	Divario P-18	300	145560	\$ 285.00

P-System Connectors

Tenso P-14



Description	Product	Qty/ Pair	Part Number	List Price
Invisible self-clamping glue aid (Preload function compatible) Install with Zeta P2 or CNC Material: Fiberglass reinforced plastic Size: 66x28x9.7mm Lateral tolerance: ± 1mm	Tenso P-14	80	145415	\$ 70.00
	Tenso P-14	300	145425	\$ 240.00
	Tenso Preload Clips	300	145426	\$ 50.00
	Tenso Preload Clips	1,000	145436	\$ 140.00

P-System Bulk Boxes

Product	Qty/ Pair	Part Number	List Price
Clamex P-14	1,000	145356	\$1,250.00
Clamex P-10	1,000	145374	\$1,250.00
Clamex P-14 CNC-use only	2,000	145396	\$2,275.00
Bisco P-14	1,000	145303	\$ 270.00
Divario P-18	1,000	145570	\$ 850.00
Tenso P-14	1,000	145435	\$ 695.00

P-System Accessories



Tenso P-14 Preload Clip Tool - 145430



Clamex P Drill Jig 125344



Divario Installation Tool 125500



Divario P-18 Marking Jig 125510



Zeta Clamex P-System Diamond Cutter - 132140



Zeta Clamex P-System Carbide Cutter - 132141



P-System CNC Arbor for CNC Cutter - 132150-153



6mm Brad Drill Bit- 131506



Clamex P Flexible Fitting Tool - 251993



Zeta P-System Nesting Clip - 251067



Zeta P-System 5mm Positioning Pin - 251048



Clamex P 6mm Hole Caps 90° - 335280 - 335289

Description	Part Number	List Price
Divario P-18 starter kit 80 pairs Divario P-18; plastic marking jig; one (1) Divario installation tool	145550S	\$145.00
Divario P-18 marking jig	125510	\$130.00
Divario P-18 plastic marking template	125511	\$ 16.00
Divario P-18 installation tool	125500	\$ 89.00
Zeta Clamex P-System positioning pins	251048	\$ 16.00
Zeta Clamex P-System nesting clip	251067	\$ 16.00
6mm Clamex hole caps 90° (100 pieces) Popular colors: White (335280); Black (335281); Pine (335282); Beech (335283); Brown (335284)	335280 - 335289	\$ 10.00
6mm Clamex hole caps 45° (100 pieces) Popular Colors: White (335380); Black (335381); Pine (335382); Beech (335383); Brown (335384)	335380-335384	\$ 12.00
Tenso starter kit 80 pairs Tenso P-14; 80 preload clips and preload clip insertion tool	145415S	\$ 90.00
Tenso P-14 preload clip insertion tool	145430	\$ 5.00

P-System Accessories

Description	Part Number	List Price
Zeta P-System carbide cutter, 100x7x22mm, Z3	132141	\$ 140.00
Zeta P-System diamond cutter, 100x7x22mm, Z3	132140	\$ 225.00
Zeta P-System drill jig kit for P-10 & P-14	125344	\$ 70.00
6mm brad drill bit	131506	\$ 35.00
Clamex P flexible fitting tool	251993	\$ 39.00
4mm Allen wrench, 75x55mm, nickel-plated	271945	\$ 1.30

CNC Accessories

Description	Part Number	List Price
P-System CNC diamond groove cutter DP 100.4x7x30mm, 4 /6.6 /DTK 48mm, Z3	132142	\$ 325.00
P-System CNC arbor for CNC groove cutter #132142 above Please specify: shaft Ø 20x90x102; 25x60x102; 16x50x85; 16x55x68	132150- 132153	\$ 250.00
P-System CNC 6mm drill bit for Clamex Allen wrench hole L=100 / 35mm, Shaft = 10	131556	\$ 89.00
CNC shaft tool cutter - Solid carbide, shaft Ø 12 × 40, L = 80 mm Only for machining with 5 axis CNC machines	131342	\$ 250.00

Lamello System Biscuits and Plates

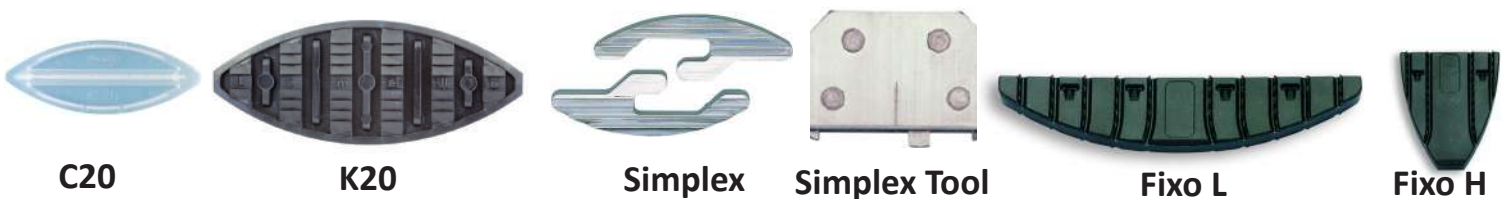


Biscuits

Description	Size	Part Number	List Price
Box of 1,000	#20	144020	\$ 49.00
Box of 1,000	#10	144010	\$ 49.00
Box of 1,000	#0	144000	\$ 49.00
Box of 1,000 #20(500); #10(250); #0(250)	Assorted	144030	\$ 80.00
Box of 1,000 - Requires H9 cutter	H9	144009	\$ 55.00

Blister Packs

Description	Size	Part Number	List Price
Blister pack of 80	#0; #10; #20	144500 144510 144520	\$ 9.99
Blister pack of 250	H9	144509	\$ 24.99
Blister Pack of 80	K20	145001	\$ 39.99



Specialty Plates

Description	Size	Part Number	List Price
Solid surface plate - Box of 250	C20	145010	\$ 65.00
Clamping plate - Box of 250	K20	145000	\$ 98.00
Simplex 20 interlocking plates Box of 100	Simplex 20	166101	\$ 95.00
Simplex insertion tool	Simplex Tool	166110	\$ 30.00
Box of 80	Fixo H or L	145021/22	\$ 45.00
Box of 80 - 40/each Fixo H & L	Fixo Mixed	145020	\$ 45.00
Box of 400	Fixo H or L	145026/25	\$ 120.00

Cabineo

Cabineo Connectors and Starter Kit



Description	Product	Qty	Part Number	List Price
Cabineo Starter Set Includes 40 pieces of Cabineo 8 &12, Cabineo tool & cover caps	Cabineo Starter Set	1	186305	\$ 70.00



Description	Product	Qty	Part Number	List Price
Cabineo 8 (White) For center panels Includes ball tip driver	Cabineo 8	500	186310	\$ 180.00
		2,000	186311	\$ 650.00
Cabineo 8 (Black) For center panels Includes ball tip driver	Cabineo 8	500	186340	\$ 180.00
		2,000	186341	\$ 650.00



Description	Product	Qty	Part Number	List Price
Cabineo 12 (White) For corner connections Includes ball tip driver	Cabineo 12	500	186320	\$ 180.00
		2,000	186321	\$ 650.00
Cabineo 12 (Black) For corner connections Includes ball tip driver	Cabineo 12	500	186330	\$ 180.00
		2,000	186331	\$ 650.00

Cabineo Accessories



Description	Part Number	List Price
Cabineo 4mm magnetic hex drive tool with handle	256300	\$ 43.00
Cabineo 4mm magnetic hex driver - fits traditional drill chucks and tool handle	276312	\$ 10.00
Cabineo 4mm economy hex driver- 100 count	276302	\$155.00
Cabineo drill 15mm dia., short centering point 0.8mm	136312	\$ 89.00

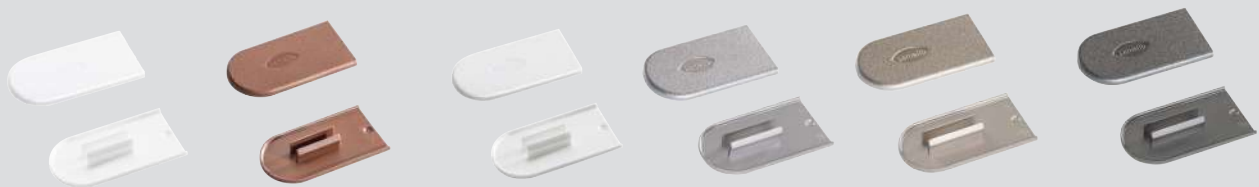
*When ordering please mention the letter associated with the color after the part number.

Cabineo

Cabineo Accessories



Pure White (W) Black (T) Dark Grey (A) Window Grey (F) Brown Beige (B) Ivory (H)



Signal White (S) Fawn Brown (R) Papyrus White (P) Silver (C) Nickel (N) Dark Steel (D)

Description	Part Number	List Price
Cabineo cover caps* (100 pieces) Signal White (S); Pure White (W); Fawn Brown (R); Brown Beige (B); Window Grey (F); Ivory (H); Papyrus White (P); Dark Grey (A) ; Black (T)	186350(*)	\$ 12.00
Cabineo cover caps (2,000 pieces) Signal White (S); Pure White (W); Fawn Brown (R); Brown Beige (B); Window Grey (F); Ivory (H); Papyrus White (P); Dark Grey (A) ; Black (T)	186351(*)	\$ 155.00
Cabineo cover caps* metallic look (100 pieces) Silver (C); Nickel (N); Dark Steel (D)	186350(*)	\$ 15.00
Cabineo cover caps* metallic look (2,000 pieces) Silver (C); Nickel (N); Dark Steel (D)	186351(*)	\$ 200.00

*When ordering please mention the letter associated with the color after the part number.

Attachments, Accessories & Replacement Carbide Carbide Cutters



Dust Suction Hose



Dust Bag



6 Tooth Carbide
Cutter Classic Original



Cantex Guide Stop

Attachments, Accessories & Replacement Carbide Cutters

Description	Part Number	List Price
Systainer 2 T-Loc case with insert for Lamello Biscuit Joiners	331565	\$ 90.00
Dust bag for all Biscuit Joiners	257530	\$ 45.00
Dust suction hose set	121810	\$ 65.00
Clamex S carbide cutter, 100x8x22mm	132108	\$ 185.00
Clamex S drill jig	125240	\$ 120.00
6 tooth carbide cutter for Classic Original	132106	\$ 50.00
4 tooth carbide cutter for H9	132009	\$ 110.00
6 tooth carbide cutter/scorer for Top 21	132000	\$ 120.00
Minispot cutter G2 - Fits all Minispot and plate joining machines	132217	\$ 199.00
Cantex reversible carbide knives (Set of 3)	131822	\$ 45.00
Cantex parallel guide stop	121290	\$ 170.00



800.252.6355 (West Coast)

www.csaw.com

888.777.2729 (East Coast)